



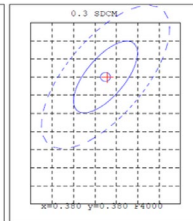
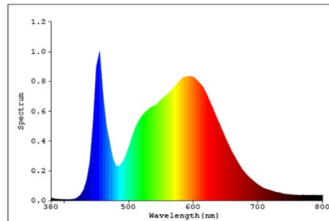
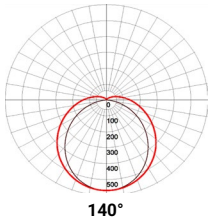
DESCRIPTION

The T8 LED Tube is a high-performance lighting solution that combines energy efficiency, durability, and superior brightness. Available in 9W to 18W options, it provides long-lasting illumination for various applications. Featuring a sturdy aluminum housing and a high-quality polycarbonate lens in clear or frosted finishes, it ensures optimal durability and customizable lighting. Designed for maximum efficiency, it delivers high lumen output with low energy consumption, reducing both energy costs and environmental impact. With its extended lifespan and minimal maintenance, the T8 LED Tube is a cost-effective, reliable choice for modern lighting needs.

KEY FEATURES

- Internal driver available with dual mode (UL Type A and Type B)
- Wide range of color temperature options available from 2700 K to 6500 K
- Aluminum shell and polycarbonate lens makes this tube shatter-proof, with clear and frosted lens options
- G-5 bi-pin socket
- Available in multiple lengths

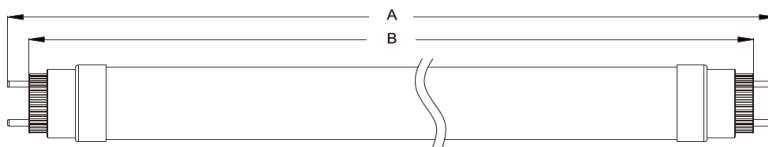
PHOTOMETRY



APPLICATIONS

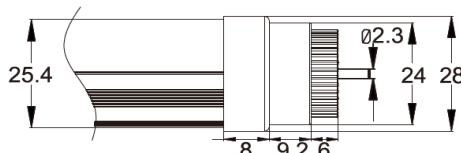
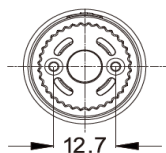
- Commercial warehouses and office spaces
- Healthcare facilities
- School buildings

DIMENSIONS



	2ft	4ft
A	23.7"	47.7"
B	23.14"	45.1"

The dimensions in the image are in mm



Catalog Number	
Notes	
Type	

TECHNICAL SPECIFICATIONS

Model No.	TB9-T82	TB10-T84	TB12-T84	TB15-T84	TB18-T84
Power Consumption(±10%)	9W	10W	12W	15W	18W
Power Supply	LED Driver				
Input Voltage	AC 100-277 VAC 50/60 Hz				
Power Factor	>0.9				
THD	<20%				
Control	Not Dimmable				

OPTIC SPECIFICATIONS

LED Type	SMD 28335				
Luminous Flux (±10% 160 lms/w)	1140 lms	1600 lms	1920 lms	2400 lms	2880 lms
Efficacy Options (4000K Ra80)	S-190 lms/w, T-160 lms/w, H-130 lms/w				
Correlated Color Temperature	2700K, 3000K, 3100K, 4000K, 4500K, 5000K, 6000K, 6500K				
Color Rendering Index	Ra80				
Beam Angle	140°				
UGR level	N/A				

MOUNTING AND PRODUCT DIMENSIONS

Product Dimension (L)	23.7"	47.7"
Carton Gross Weight (25 units)	12.7 lbs	25 lbs.0
Carton Size (25 units) (LxWxH)	24x7.4x4.7	48.2x7.4x4.7
Mounting	Single End & Double End Options	
Socket Type	G5 bi-pin socket (shunted and non-shunted)	
Material	Aluminum Polycarbonate Lens	
Fixture Color	Clear or Frosted Lens Available	
IK Rating	N/A	
IP Rating	IP20	

LIFESPAN AND WARRANTY

Operating Temperature	-40°F to 104°F
Warranty	5 Years

SAFETY CERTIFICATIONS

- Luminaires (UL 1598:2021 Ed.5)
- Luminaires (CSA C22.2#250.0:2021 Ed.5)

ORDERING INFORMATION

T8						
Series	Wattage & Lumen Output	Voltage	Correlated Color Temperature (CCT)	Beam Angle	Socket Type	Lens Type
T8 B 2ft (LED Tube)	9W (1140 lms)	MV (100-277V)	27K (2700K)	140D (140°)	SE (Single-End Power)	CL (Clear)
T8 B 4ft (LED Tube)	10W (1600 lms)		30K (3000K)			
	12W (1920 lms)		40K (4000K)			
	15W (2400 lms)		45K (4500K)			
	18W (2880 lms)		50K (5000K)			
			60K (6000K)			
			65K (6500K)			
					DE (Double-End Power)	FR (Frosted)