



DESCRIPTION

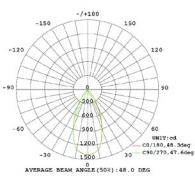
This commercial LED downlight features a deep reflector design, which helps to distribute light more evenly and efficiently. The high-lumen SMD light source, adjustable CCT, and power make this commercial LED downlight a versatile and efficient lighting solution for a variety of applications. Magnesium Alloy is a high-performance material that is well-suited for use in LED downlights. Its lightweight, durable, and corrosion-resistant properties and its machinability make it a popular choice for manufacturers looking to implement efficient and long-lasting lighting solutions.

APPLICATION(S)

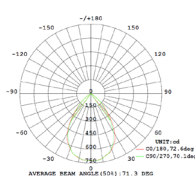
General Ambient Lighting
Commercial Facilities

PHOTOMETRY

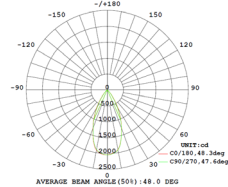
10W 50°



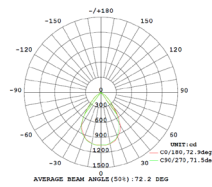
10W 70°



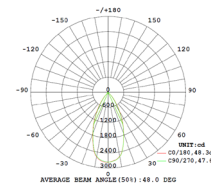
15W 50°



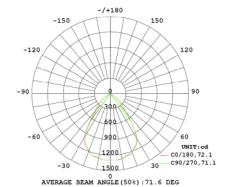
15W 70°



20W 50°

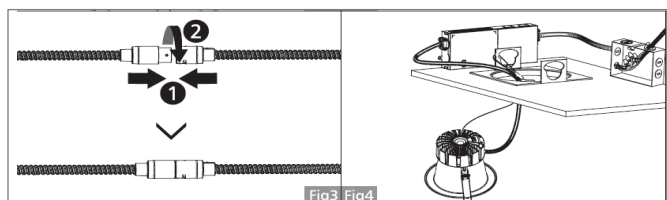
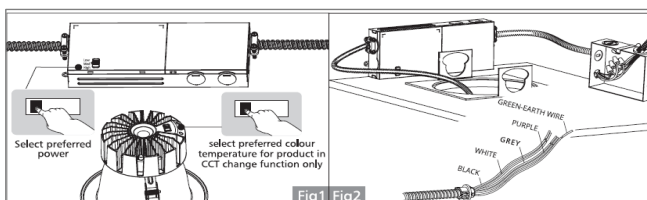


20W 70°



MOUNTING OPTIONS

Recessed



Catalog Number	
Notes	
Type	

TECHNICAL SPECIFICATIONS

Model No.	CXII-10	CXII-15	CXII-20
Power Consumption(±10%)	10W	15W	20W
Power Supply	LED Driver		
Input Voltage	120-277V, 50/60Hz		
Power Factor	0.9		
Surge Protection	N/A		
Control	1-10V Dimmable		

OPTIC SPECIFICATIONS

LED Type	SMD
Luminous Flux (±10%)	1600lm
Efficacy(4000K Ra80)	80 lm/w
Correlated Color Temperature	3000K, 4000K, 5000K (Adjustable)
Color Rendering Index	Ra80
Beam Angle	50°, 70°

MOUNTING AND PRODUCT DIMENSIONS

Product Dimension*	A	B	C
	6"	5"	4"
Luminaire Net Weight	2.43 lbs		
Export Carton Size	23-5/8" x 22-7/16" x 14-9/16"		
Gross Weight	37.3 lbs		
Mounting Option	Recessed Mounting		
Material	Polycarbonate PC + Aluminum		
Finish	Powder Coating		
Fixture Color	White Trim and Silver Housing		
IK Rating	N/A		
IP Rating	N/A		

LIFESPAN AND WARRANTY

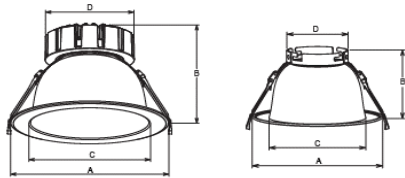
Operating Temperature	-4°F to 104°F
Warranty	5 Years

SAFETY CERTIFICATIONS

Luminaires (UL 1598:2021 Ed.5)
Luminaires (CSA C22.2#250.0:2021 Ed.5)

DIMENSIONS

10W-20W



*Reference the dimension table

ORDERING INFORMATION

CXII 4"					
Series	Wattage & Lumen Output	Voltage	Correlated Color Temperature (CCT)	Beam Angle	Mounting Option
CXII 4" (CXO II 4" LED Downlight)	10W (800lm) 15W (1200lm) 20W (1600lm)	MV (120-277V)	30K (3000K) 40K (4000K) 50K (5000K)	50D (50°) 70D (70°)	RM (Recessed Mounting)
Finish Color	Control Options	Accessories			
WT (White Trim & Silver Housing)	1-10V (1-10V Dimmable)	EMB (Batttery Back-up)			