

Satin Aluminum or Powder Coated Finish per Customer Specification.

C (Butt Sq.)	D (Top Sq.)	F (Bolt Cir. Dia.)	G (Base Sq.)	H (Bolt Proj.)	I (Bolt Size)
4	4	8.5 - 9.5	9.875	1.5	.75 x 17 x 3
5	5	10.5 - 11.5	11.25	2	.75 x 30 x 3
6	6	12 - 13	12.75	2.25	1 x 36 x 4
6.625	6.625	13.5	13.5	2.25	1 x 36 x 4

Dimensions in inches.

### Pole

The pole shaft will be constructed of seamless extruded tube of 6XXX Series Aluminum Alloy per the requirements of ASTM B221. The shaft assembly shall be full-length heat treated after base weld.

### Base Style

4-Bolt Cast Aluminum Base Flange of Alloy 356-T6 with Aluminum Snap-In Bolt Covers.



### Handhole

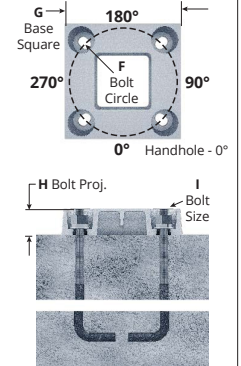
**4"-5" Butt Squares -**  
2" x 4" Handhole with square Lap Style Aluminum Door and two (2) Stainless Steel Self-Tapping Attaching Screws. A Grounding Provision incorporating a tapped 1/4"-20NC Grounding Provision is provided opposite the Handhole.



**6"+ Butt Square -**  
3" x 5" Handhole with square Lap Style Aluminum Door and two (2) Stainless Steel Self-Tapping Attaching Screws. A Grounding Provision incorporating a tapped 1/4"-20NC Grounding Provision is provided opposite the Handhole.

### Anchorage

Anchorage Kit will include four (4) L-shaped Steel Anchor Bolts conforming to AASHTO M314-90 Grade 55. Ten inches (10') of threaded end will be galvanized per ASTM A153. Kits will contain four (4) Hex Nuts, four (4) Lock Washers, and four (4) Flat Washers (all components Galvanized Steel). A bolt circle template will be provided.

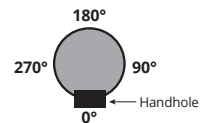


### Vibration Damper

If determined necessary by Big Shine LED, a top-mount, field installed First Mode Vibration Damper will be provided. Customer specification of the damper is available.

### Mounting Designation

#### Side Drill Mount

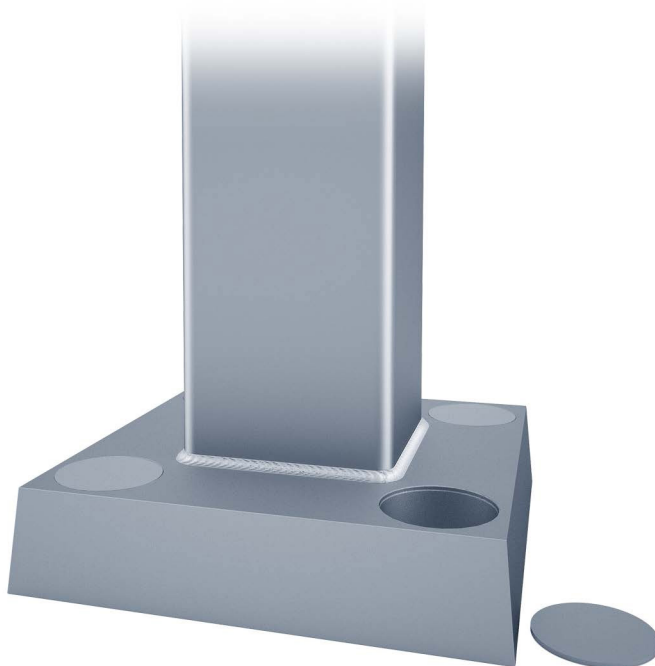


#### Tenon Mount

For Tenon Mount applications specify both Tenon diameter (2.375", 2.875", 3.5", etc.) and length (3", 4", etc.).



A Mtg Hgt.	B Wall Thickness	C Butt Sq.	Total Lum. Weight	Maximum EPA					Model Num.
				90	100	110	120	130	
08	0.125"	4	100	23.2	18.4	17.2	14.2	11.8	BSL-SSA-08-B-4-4-**
10	0.125"	4	100	17.6	13.8	12.8	10.4	8.6	BSL-SSA-10-B-4-4-**
10	0.188"	4	100	26.2	20.8	19.4	16.0	13.2	BSL-SSA-10-D-4-4-**
12	0.125"	4	100	13.8	10.6	9.8	7.8	6.2	BSL-SSA-12-B-4-4-**
12	0.188"	4	100	21.0	16.4	15.2	12.4	10.2	BSL-SSA-12-D-4-4-**
12	0.188"	5	100	35.0	27.6	25.6	20.8	17.2	BSL-SSA-12-D-5-4-**
14	0.125"	4	85	10.8	8.2	7.6	5.8	4.6	BSL-SSA-14-B-4-4-**
14	0.188"	4	100	17.0	13.2	12.0	9.6	7.8	BSL-SSA-14-D-4-4-**
14	0.188"	5	100	28.6	22.4	20.6	16.6	13.6	BSL-SSA-14-D-5-4-**
15	0.125"	4	70	9.8	7.2	6.6	5.0	3.8	BSL-SSA-15-B-4-4-**
15	0.188"	4	100	15.4	11.8	10.8	8.6	6.8	BSL-SSA-15-D-4-4-**
15	0.188"	5	100	26.0	20.2	18.6	15.0	12.0	BSL-SSA-15-D-5-4-**
16	0.125"	4	55	8.8	6.4	5.8	4.4	3.2	BSL-SSA-16-B-4-4-**
16	0.188"	4	100	13.8	10.6	9.6	7.6	6.0	BSL-SSA-16-D-4-4-**
16	0.188"	5	100	23.8	18.4	16.8	13.4	10.8	BSL-SSA-16-D-5-4-**
18	0.125"	4	25	6.8	4.8	4.2	3.0	2.0	BSL-SSA-18-B-4-4-**
18	0.188"	4	80	11.2	8.4	7.6	5.8	4.4	BSL-SSA-18-D-4-4-**
18	0.188"	5	100	19.4	14.8	13.4	10.4	8.2	BSL-SSA-18-D-5-4-**
18	0.250"	4	100	15.2	11.6	10.6	8.4	6.6	BSL-SSA-18-F-4-4-**
20	0.125"	4	40	5.0	3.4	2.8	1.8	-	BSL-SSA-20-B-4-4-**
20	0.188"	4	50	9.0	6.6	5.8	4.2	3.0	BSL-SSA-20-D-4-4-**
20	0.188"	5	100	15.8	11.8	10.6	8.0	6.0	BSL-SSA-20-D-5-4-**
20	0.188"	6	100	24.8	18.8	17.0	13.2	10.2	BSL-SSA-20-D-6-4-**
20	0.250"	4	90	12.4	9.4	8.4	6.4	4.8	BSL-SSA-20-F-4-4-**
20	0.250"	5	100	22.0	16.8	15.2	11.8	9.2	BSL-SSA-20-F-5-4-**
20	0.250"	6	100	34.2	26.4	24.2	19.0	15.2	BSL-SSA-20-F-6-4-**
25	0.188"	5	45	9.4	6.2	5.4	3.4	1.8	BSL-SSA-25-D-5-4-**
25	0.188"	6	60	15.4	10.8	9.4	6.6	4.2	BSL-SSA-25-D-6-4-**
25	0.250"	5	65	14.0	10.0	8.8	6.2	4.4	BSL-SSA-25-F-5-4-**
25	0.250"	6	100	22.4	16.4	14.8	11.0	8.0	BSL-SSA-25-F-6-4-**
25	0.250"	6.625	100	28.8	21.4	19.2	14.6	11.0	BSL-SSA-25-F-J-4-**
30	0.188"	6	40	8.8	5.0	4.0	1.6	-	BSL-SSA-30-D-6-4-**
30	0.250"	6	25	14.4	9.6	8.4	5.2	3.0	BSL-SSA-30-F-6-4-**
30	0.250"	6.625	55	19.0	13.0	11.4	7.6	4.6	BSL-SSA-30-F-J-4-**
35	0.250"	6	70	8.0	4.0	3.0	-	-	BSL-SSA-35-F-6-4-**
35	0.250"	6.625	50	11.4	6.6	5.2	2.0	-	BSL-SSA-35-F-J-4-**



### Model Number System

The model number for Big Shine LED poles utilizes the following identification system.



### Model Number Example

#### BSL-SSA-20-D-5-4-BA

Square Straight Aluminum, 20' Mounting Height, .188" Wall Thickness, 5" Butt Square, No Taper, 4-Bolt Base, Black Powder Coat Finish.

### Wall Thickness

B = .125"  
D = .188"  
F = .250"

### Butt Square

4 = 4"  
5 = 5"  
6 = 6"  
J = 6-5/8"

### Top Square

- = No Taper

### Base Style

4 = 4-Bolt Base

### Finish

O2 = Satin Aluminum  
BA = Black Powder Coat  
BH = White Powder Coat  
BM = Dark Bronze Powder Coat  
BV = Dark Green Powder Coat  
GC = Gray Powder Coat  
\*\* = Specify Finish

### EPA Notes:

Effective Projected Area (EPA) in square feet. EPA's calculated using wind velocity (mph) indicated in accordance with 2009 AASHTO LTS-5 using a 25 year design life. Maximum EPA is based on the luminaire weight shown. Increased luminaire weight may reduce the maximum EPA. If weight is exceeded, or if other design life or code is required, please consult the factory.