

Powder Coated, Galvanized or Powder Coated over Galvanized Finish Per Customer Specification.

C (Butt Sq.)	F (Bolt Cir. Dia.)	G (Base Sq.)	H (Bolt Proj.)	I (Bolt Size)
4.5	7.5-8.5	8	3.75	.75 x 17 x 3
5.2	8 - 9	8.5	3.75	.75 x 17 x 3
6.1 - 6.6	9.5 - 10.5	10	3.75	.75 x 30 x 3
6.8	10 - 11	10	3.75	.75 x 30 x 3
7.0* - 7.5	10.5 - 11.5	10.5	4.875	1 x 36 x 4
8.0 - 8.1	11 - 12	11	4.875	1 x 36 x 4
8.5	11.5-12.5	12	4.875	1 x 36 x 4
9.0 (11 Gauge)	12 - 13	12.375	4.875	1 x 36 x 4
9.0 (7 Gauge)	13 - 14	12.75	5.875	1.25 x 48 x 6
10	13.5 - 14.5	13	4.875	1 x 48 x 4
11	15 - 16	14	5.875	1.25 x 48 x 6
12	16 - 17	15.5	6.75	1.5 x 54 x 6

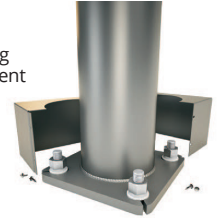
Dimensions in inches.

Pole

Pole shaft shall be weldable-grade, hot-rolled, commercial quality carbon steel tubing conforming to ASTM A595 Grade A. Options include 11 gauge and 7 gauge. All Welds shall conform to AWS D1.2 using ER70S-6 electrodes.

Base Style

4-Bolt Steel Base Plate of fabricated hot rolled carbon steel conforming to ASTM A36 or equivalent (36 ksi minimum yield) with 2-piece Base Cover and attaching hardware. Base Cover will be fabricated from metal materials.



Handhole

Up To 5.9" Butt Diameters - Reinforced, 3" x 5" Handhole with Cover, Stainless Steel Screw and Back Bar. A Grounding Provision incorporating a tapped 1/2"-13NC hole will be welded to the handhole frame.

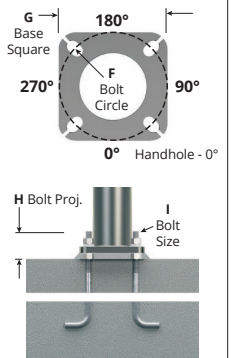


6+ Butt Diameters - Reinforced, 4" x 6-1/2" Handhole with Cover, Stainless Steel Screw and Back Bar. A Grounding Provision incorporating a tapped 1/2"-13NC hole will be welded to the handhole frame.



Anchorage

Anchorage Kit will include four (4) L-shaped Steel Anchor Bolts conforming to AASHTO M314-90 Grade 55. Ten inches (10") of threaded end will be galvanized per ASTM A153. Kits will contain eight (8) Hex Nuts, four (4) Lock Washers, and eight (8) Flat Washers (all components Galvanized Steel). A bolt circle template will be provided.

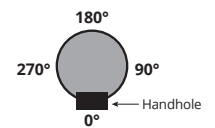


Vibration Damper

If determined necessary by Big Shine LED an internal, factory installed, Second Mode Vibration Damper will be provided. Customer specification of the damper is available.

Mounting Designation

Side Drill Mount



Tenon Mount

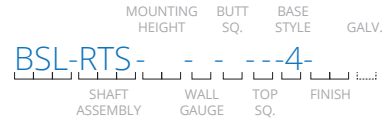
For Tenon Mount applications specify both Tenon diameter (2.375", 2.875", 3.5", 4", etc.) and length (3", 4", 5", 6", etc.).



A Mtg Hgt.	B Wall Gauge	C Butt Dia.	D Top Dia.	Total Lum. Weight	Maximum EPA						Model Num.
					90	100	110	120	130	140	
10	11	4.5	3.1	150	36.0	29.0	27.0	22.4	18.8	16.0	BSL-RTS-10-B-4-5-4-**-
14	11	5.2	3.1	150	34.0	27.2	25.2	20.8	17.4	14.8	BSL-RTS-14-B-5-2-4-**-
20	11	6.1	3.3	150	26.8	21.0	19.4	15.8	13.2	11.0	BSL-RTS-20-B-6-1-4-**-
20	11	6.6	3.7	150	26.4	20.8	19.2	15.7	13.0	11.0	BSL-RTS-20-B-6-6-4-**-
25	11	6.1	2.6	150	19.2	14.8	13.6	10.9	8.8	7.2	BSL-RTS-25-B-6-1-4-**-
25	11	6.8	3.3	150	19.8	15.2	14.0	11.2	9.2	7.6	BSL-RTS-25-B-6-8-4-**-
25	11	6.8	3.3	150	27.4	21.4	19.8	16.2	13.4	11.2	BSL-RTS-25-B-7-0-4-**-
30	11	6.8	2.6	150	14.6	11.0	10.0	7.8	6.1	4.8	BSL-RTS-30-B-6-8-4-**-
30	11	6.8	2.6	150	19.4	15.2	14.0	11.2	9.0	7.4	BSL-RTS-30-B-7-0-4-**-
30	11	7.5	3.3	150	25.3	19.8	18.4	14.8	12.2	10.2	BSL-RTS-30-B-7-5-4-**-
30	11	8.0	3.8	150	28.7	23.1	21.4	17.7	14.7	12.4	BSL-RTS-30-B-8-0-4-**-
30	11	8.5	4.3	150	31.3	25.9	24.3	20.4	17.3	14.7	BSL-RTS-30-B-8-5-4-**-
30	11	9.0	4.8	150	33.5	28.3	26.7	22.0	18.6	15.8	BSL-RTS-30-B-9-0-4-**-
30	7	9.0	4.8	150	61.8	49.6	46.2	38.6	32.4	27.8	BSL-RTS-30-D-9-0-4-**-
35	11	7.5	2.6	150	18.0	14.0	12.9	10.2	8.3	6.5	BSL-RTS-35-B-7-5-4-**-
35	11	8.1	3.2	150	23.1	18.0	16.6	13.4	10.8	8.8	BSL-RTS-35-B-8-1-4-**-
35	11	8.5	3.6	150	25.1	20.2	18.6	15.1	12.4	10.4	BSL-RTS-35-B-8-5-4-**-
35	11	9.0	4.1	150	27.7	21.9	20.2	16.5	13.7	11.5	BSL-RTS-35-B-9-0-4-**-
35	7	9.0	4.1	150	48.6	38.8	36.0	29.8	25.0	21.2	BSL-RTS-35-D-9-0-4-**-
39	11	8.1	2.6	150	16.7	13.1	12.1	9.6	7.5	5.7	BSL-RTS-39-B-8-1-4-**-
39	11	9.0	3.5	150	23.4	18.0	16.4	13.2	10.7	8.8	BSL-RTS-39-B-9-0-4-**-
39	7	9.0	3.5	150	40.1	31.7	29.3	24.0	20.0	16.8	BSL-RTS-39-D-9-0-4-**-
39	11	10	4.5	150	26.6	20.8	19.2	15.6	13.0	10.8	BSL-RTS-39-B-1-0-4-**-
39	7	11	5.5	150	53.7	43.2	40.2	33.3	28.0	23.6	BSL-RTS-39-D-1-1-4-**-

Model Number System

The model number for Big Shine LED poles utilizes the following identification system.



Model Number Example

BSL-RTS-30-B-80-4-BM

Round Tapered Steel, 30' Mounting Height, 11 Gauge, 8.0" Butt Diameter, Tapered, 4-Bolt Base, Dark Bronze Powder Coat Finish.

Wall Gauge

B = 11 Gauge
D = 7 Gauge

Butt Diameter

- 45 = 4.5"
- 52 = 5.2"
- 61 = 6.1"
- 66 = 6.6"
- 68 = 6.8"
- 70 (Nominal) = 6.8"
- 75 = 7.5"
- 80 = 8.0"
- 81 = 8.1"
- 8.5 = 8.5"
- 9.0 = 9.0"
- 10 = 10"
- 11 = 11"
- 12 = 12"

Top Diameter

- = Varies (See Table)

Base Style

4 = 4-Bolt Anchor Base

Finish

- BA = Black Powder Coat
- BH = White Powder Coat
- BM = Dark Bronze Powder Coat
- BV = Dark Green Powder Coat
- GC = Gray Powder Coat
- ** = Specify Finish
- 00 = Galvanized Only (No Powder Coat)

Galvanization

G = Galvanized

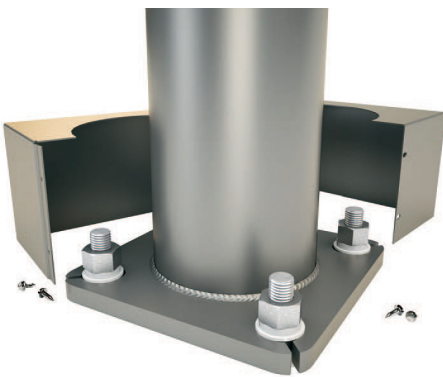
Code "G" to be used only if pole is to be specified "Powder Paint Over Galvanized" or "Galvanized Only."

EPA Notes:

Effective Projected Area (EPA) in square feet. EPA's calculated using wind velocity (mph) indicated in accordance with 2009 AASHTO LTS-5 using a 25 year design life. Maximum EPA is based on the luminaire weight shown. Increased luminaire weight may reduce the maximum EPA. If weight is exceeded, or if other design life or code is required, please consult the factory.

2-Piece Shaft Design

A Mtg Hgt.	B Wall Gauge	C Butt Dia.	D Top Dia.	Total Lum. Weight	Maximum EPA						Model Num.
					90	100	110	120	130	140	
45	11	10	3.8	150	20.2	15.3	14.0	10.8	8.3	6.3	BSL-RTS-45-B-1-0-4-**-
45	7	11	4.8	150	42.8	33.8	31.4	25.9	21.6	18.2	BSL-RTS-45-D-1-1-4-**-
45	7	12	5.8	150	42.3	37.1	35.5	31.1	27.3	23.9	BSL-RTS-45-D-1-2-4-**-
50	11	10	3.1	100	16.3	11.0	9.8	6.6	4.3	2.5	BSL-RTS-50-B-1-0-4-**-
50	7	11	4.1	150	32.1	26.3	24.9	20.9	17.2	14.4	BSL-RTS-50-D-1-1-4-**-
50	7	12	5.1	150	34.8	27.6	25.6	21.0	17.6	15.0	BSL-RTS-50-D-1-2-4-**-



Square Metal powder coated base covers are standard in all RTS poles.