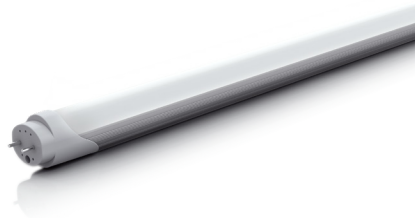


LED T8 4FT Tube Light

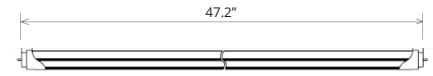
Big Shine LED tubes emit clean, bright, and consistent light. The T8 tubes are designed to be the most energy-efficient solution to replace fluorescent T8 and T12 fixtures. They contain no mercury therefore allowing for a brighter and safer space at a lower cost.

Big Shine LED's T8 tubes have a cover and end caps made of polycarbonate, making them one of the safest options in LED tubes.

Their internal driver provides convenience for every installation and allows them to be safer and more efficient for your facility.



DIMENSIONS



APPLICATIONS

Industrial, Commercial, Recreational

MODEL OPTIONS

Manufacturer	Fixture Type	Wattage	Voltage	Name	Driver	Chip	CCT	Beam Angle
BSL BIG SHINE LED	TL Tube Light	15W, 18W	100-277V	T84	BS Big Shine Driver	SN San'an	3000K, 4000K, 5000K	120°

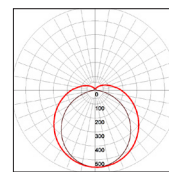
TECHNICAL SPECIFICATIONS

	15W	18W
Lumens	1,875	2,070
Efficacy	125	115
CRI	80 (5000K)	80 (5000K)
Voltage Input	100-277V	100-277V
Voltage Output	36V	36V
Amperage	0.17	0.2
Hertz	50-60 Hz	50-60 Hz
Total Harmonic Dist.	15%	15%
Control Options	Non-Dimmable	Non-Dimmable
Operating Temp.	-4~104°F	-4~104°F
IP Rating	IP20	IP20
IK Level	N/A	N/A
Weight	0.66 lb	0.66 lb
Driver Life	50,000 hrs	50,000 hrs

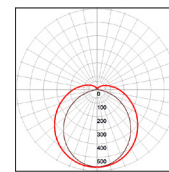
FIELD & BEAM ANGLES

MODEL	Beam	Height vs. Illuminance (ft vs. lx)		
	Angle	9.8 ft	19.7 ft	29.5 ft
BSL-TL15-T84-BSSN-5000K-120	120	61.3	15.3	6.8
BSL-TL15-T84-BSSN-4000K-120	120	63.3	15.8	7.0
BSL-TL18-T84-BSES-5000K-120	120	103.5	25.9	11.5
BSL-TL18-T84-BSES-4000K-120	120	100.0	25.0	11.1

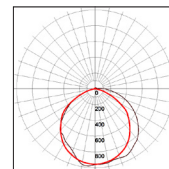
PHOTOMETRICS



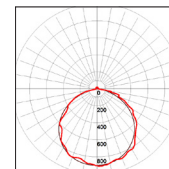
15W-5000K-120°



15W-4000K-120°



18W-5000K-120°



18W-4000K-120°

BASE TYPE

G13

LENS OPTIONS

