



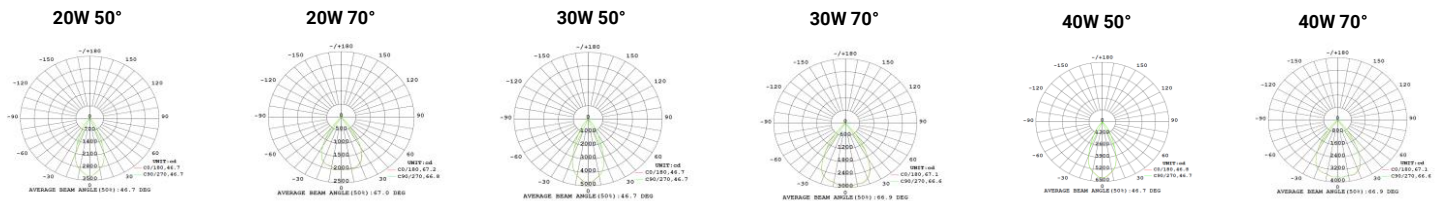
Description

This commercial LED downlight features a deep reflector design, which helps to distribute light more evenly and efficiently. The high-lumen SMD light source, adjustable CCT, and power make this commercial LED downlight a versatile and efficient lighting solution for a variety of applications. Magnesium Alloy is a high-performance material that is well-suited for use in LED Down lights. Its lightweight, durable, and corrosion-resistant properties and its machinability make it a popular choice for manufacturers looking to create efficient and long-lasting lighting solutions.

Applications

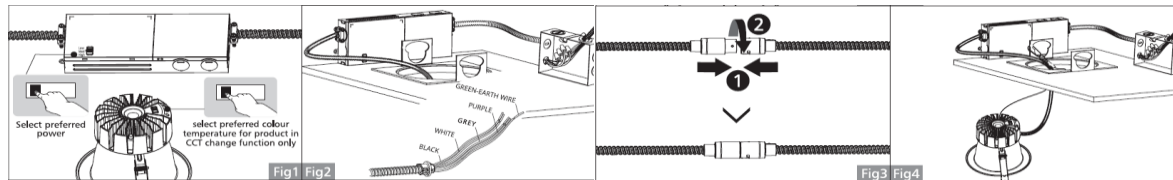
General Ambient Lighting
Commercial Facilities

Photometry



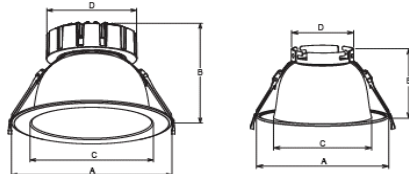
Mounting Options

Recessed



Dimensions

20W-40W



*Reference the dimension table

Big Shine LED
300 Corporate Blvd, Newburgh, NY 12550 | 845-444-5255

Electrical Information

Model No.	CXII-20	CXII-30	CXII-40
Power Consumption(±10%)	20W	30W	40W
Power Supply	LED Driver		
Input Voltage	120-277V, 50/60Hz		
Power Factor	0.9		
Surge Protection	N/A		
Control	1-10V Dimmable		

Optic Information

LED Type	SMD		
Luminous Flux (±10%)	3800lm		
Efficacy(4000K Ra80)	95 lm/w		
Correlated Color Temperature	3000K, 4000K, 5000K (Adjustable)		
Color Rendering Index	Ra80		
Beam Angle	50°, 70°		

Dimensions and Mount

Product Dimension	A	B	C
	8-1/4"	6-1/8"	6"
Luminaire Net Weight	3.5 lbs		
Export Carton Size	26" x 18-1/2" x 16-15/16"		
Gross Weight	34.8 lbs		
Mounting Option	Recessed Mounting		
Material	Polycarbonate PC		
	Magnesium Alloy		
Finish	Powder Coating		
Fixture Color	White Trim and Silver Housing		
IK Rating	N/A		
IP Rating	N/A		

Lifespan and Warranty

Operating Temperature	-4°F to 104°F
Warranty	5 Years

Safety Certifications

Luminaires (UL 1598:2021 Ed.5)
Luminaires (CSA C22.2#250.0:2021 Ed.5)