



BIG SHINE LED LIGHTING



Beautiful products,  
latest designs,  
state-of-the-art  
technology.

[www.bigshineled.com](http://www.bigshineled.com)

To ensure performance, longevity and partner satisfaction, each phase of our manufacturing process undergoes rigorous quality control. Our full-spectrum approach guarantees quality products and delivers optimal results for your facility.

## APPLICATIONS

### COMMERCIAL

Offices  
Conference Centers  
Supermarkets  
Shopping Malls  
Schools  
etc.



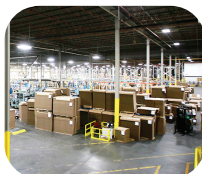
### PUBLIC

Sports Complexes  
Advertising Light Boxes  
Airports  
Train Stations  
Gas Stations  
Hospitals  
etc.



### INDUSTRIAL

Manufacturing Plants  
Metal Fabricators  
Warehouses  
Storage Facilities  
Workshops  
etc.



[www.bigshineled.com](http://www.bigshineled.com)

PARTNERSHIP  
QUALITY  
INNOVATION

CONTACT (845) 444-5255

ADDRESS 300 Corporate Blvd.  
Newburgh, NY 12550



PARTNERSHIP | QUALITY | INNOVATION

Big Shine LED is a manufacturing company specializing in LED lighting. As an LED lighting manufacturer utilizing green technology, we develop products and solutions for various industrial and commercial applications. We've provided quality lighting upgrades for indoor and outdoor applications such as offices, showrooms, sports facilities, car dealerships and retail stores. We strive to provide the best quality control in all of our product lines. We promise to provide state-of-the-art technology and unparalleled installation service to our partners.

[WWW.BIGSHINELED.COM](http://WWW.BIGSHINELED.COM)



LED TUBES  
INDOOR LIGHTING



BIG SHINE LED / INDOOR LIGHTING / TUBES

## BRILLIANT QUALITY

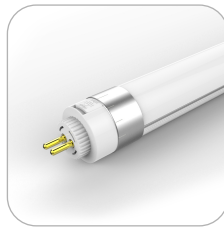
## BEST ALTERNATIVE SOLUTION

High quality, better performance.

Big Shine LED tubes emit clean, bright and consistent light.

An aluminum heat sink and side caps provide superior heat dissipation.

Both cover and end caps are fashioned with polycarbonate, qualifying as one of the safest options in LED tubes.



### T5 4FT

20W  
3000K-6500K  
120°  
2600 LUMENS  
-20~104°F



### T8 2FT

9W, 12W  
3000K-6000K  
120°, 330°  
990-1320 LUMENS  
-4~104°F



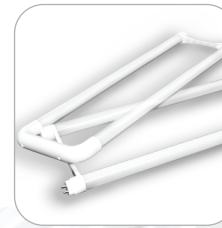
### T8 4FT

13W, 15W, 18W, 22W  
3000K-6000K  
120°, 330°  
1690-2420 LUMENS  
-4~104°F  
(15W: -20~104°F)



### T8 8FT

36W, 40W  
3000K-6000K  
120°, 330°  
3960-4400 LUMENS  
-4~40°F



### U-SHAPE

18W  
3000K-6500K  
160°  
2160 LUMENS  
-40~122°F

## HIGH QUALITY HIGH PERFORMANCE

### • 180° ROTATING END CAP

Patented with a rotating end cap for best lighting results

### • 330° BEAM ANGLE

Maximum efficacy with minimum glare

### • 140-180 lm/W

Highly energy efficient

Single-end power with anti-electric shock for safety

### Wide range of options to fit your setting:

Glass Tubes, Rotatable Tubes, Sound Sensor Tubes, Motion Sensor Tubes, Radar Sensor Tubes, Wide Angle (330°) Tubes and more.



EXCELLENT LIFE SPAN  
**50,000 hrs**  
High lumen maintenance rate of 80%